

# My New DNA Match with Matthew Nathe

By Burks Oakley II  
17 March 2025

A week or so ago, I visited the Ancestry.com website and I learned that I had a new DNA match with Matthew Nathe:



MN

## You and Matthew Nathe

1st cousin 1x removed or half 1st cousin | Maternal side

5% shared DNA: 361 cM across 22 segments

Matthew and I share 361 cM of DNA, and based solely on the size of this match, we could be as close as first-cousins once-removed.

I recognized Matthew Nathe (born in 1969) as the older son of my first-cousin, Paul Raymond Nathe (born in 1947). Paul's mother, Ruth Ida Brorström (1922-2003), was the younger sister of my mother, Grace Florence Brorström (1916-2000). This means that Paul and I are first-cousins, and Paul's son Matthew is my first-cousin once-removed. Exactly what Ancestry.com predicted...


I went on to look at the details of my DNA match with Matthew. I first saw that Ancestry.com has correctly identified our common ancestors as Paul Thure Brorström Sr. (1884-1932) and his wife Edna Florence Larsson (1889-1966):

How are you and Matthew Nathe related?


### Common Ancestors

According to Ancestry member trees, these are the common ancestors that connect you and Matthew Nathe. View a common ancestor to see the relationship path that connects you.

**Matthew Nathe could be your 1st cousin 1x removed through:**

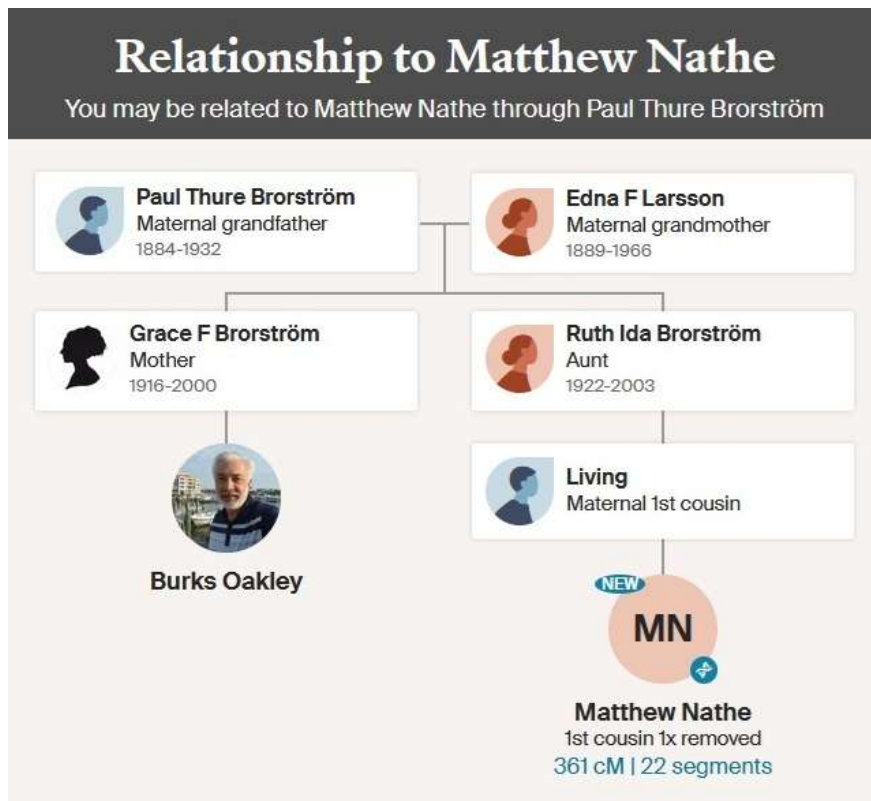


**Paul Thure Brorström**  
Maternal grandfather  
1884-1932  
[View Relationship](#)



**Edna Florence Larsson**  
Maternal grandmother  
1889-1966  
[View Relationship](#)

Here is a chart showing how Matthew and I are both descended from this couple:



Of course, since Matthew’s father Paul R. Nathe is still alive, so he is listed as “Living” in this chart.

I continued to look at the details of the DNA match that I have with Matthew. I next looked at our “Shared DNA Matches” – those people in the Ancestry.com database with whom both Matthew and I have DNA matches that are at least 20 cM in size. Here are the top seven shared matches based on the size of Matthew’s DNA match with the individual:

Shared match:	Your:	Matthew Nathe's:
<b>Stuart Eck</b>	Your: 1st cousin 917 cM Maternal side	Matthew Nathe's: 1st cousin 1x removed 606 cM
<b>Anmarie Brorström</b>	Your: 1st cousin 793 cM Maternal side	Matthew Nathe's: 1st cousin 1x removed or half 1st cousin 568 cM
<b>PTB Larson</b>	Your: 1st cousin 964 cM Maternal side	Matthew Nathe's: 1st cousin 1x removed or half granduncle 477 cM
<b>Susan Baker</b>	Your: 1st cousin 881 cM Maternal side	Matthew Nathe's: 1st cousin 1x removed 434 cM
<b>jessicalynn_eck</b>	Your: 1st cousin 1x removed 571 cM Maternal side	Matthew Nathe's: 1st cousin 1x removed or half 1st cousin 418 cM
<b>Elizabeth Brorstrom Lynes</b>	Your: 1st cousin 752 cM Maternal side	Matthew Nathe's: 1st cousin 1x removed or half grandaunt 404 cM
<b>Leslie DeMattia</b>	Your: 1st cousin 1x removed 530 cM Maternal side	Matthew Nathe's: 2nd cousin or half 1st cousin 1x removed 321 cM

Matthew’s largest shared match (606 cM) is with Stuart Eck, who is a son of Paul Thure Brorström Jr. (PTB Jr.). Matthew’s other matches are with PTB Jr.’s other children, Anmarie, Peter (PTB Larson), and Susan. The last three DNA matches

in this group are Jessica Lynn Eck (Stuart's daughter), Elizabeth "Beth" Brorström (PTB Jr.'s late daughter), and Leslie DeMattia (Annmarie's daughter).

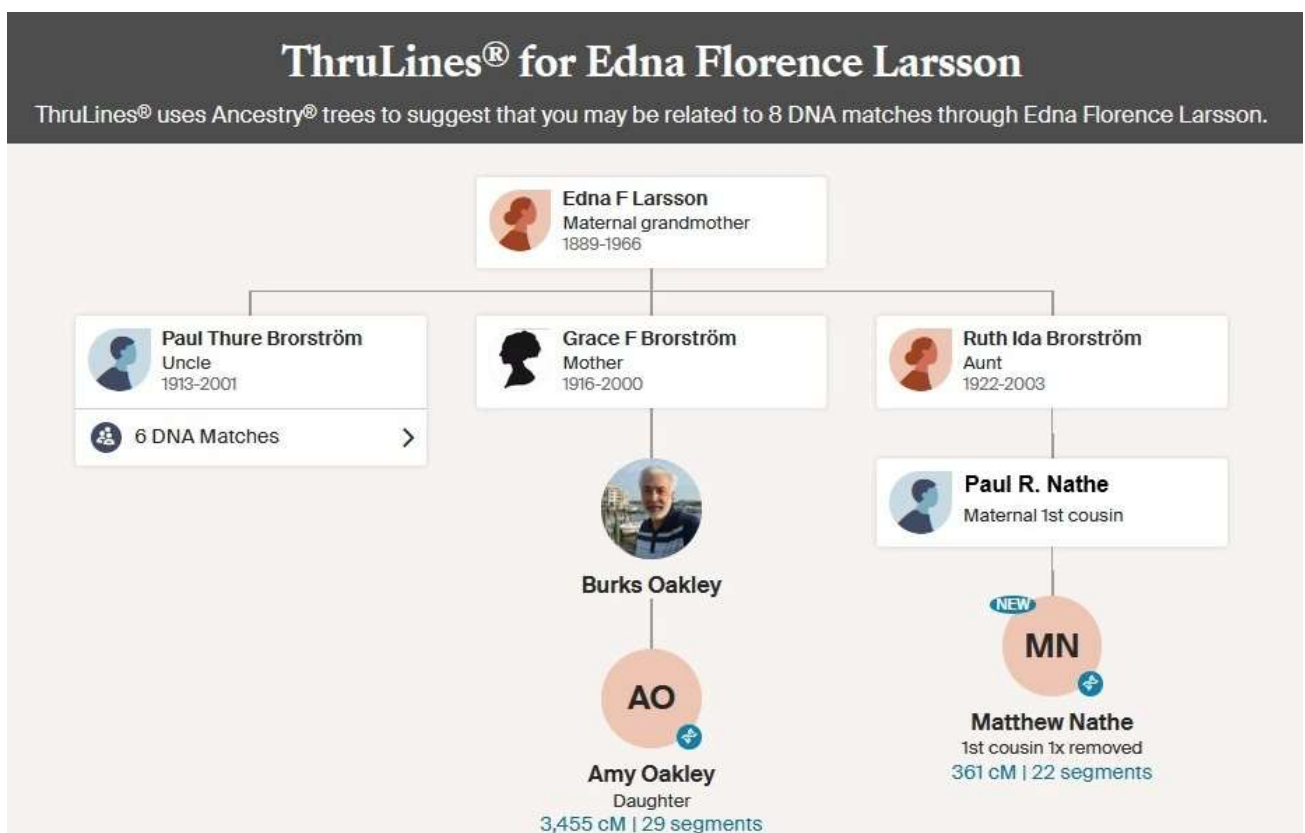
The only thing that is surprising here is that Jessica has a larger DNA match with Matthew than Beth did – and Jessica and Matthew are second-cousins, while Beth and Matthew were first-cousins once-removed. But that is just a good example of the random ways in which autosomal DNA is inherited.

Matthew and I also have "Shared DNA Matches" with Leslie DeMattia and Robert Baker:

 <b>Leslie DeMattia</b>	 +	Your: 1st cousin 1x removed 530 cM Maternal side	Matthew Nathe's: 2nd cousin or half 1st cousin 1x removed 321 cM
 <b>Robert Baker</b>	 +	Your: 1st cousin 1x removed 440 cM Maternal side	Matthew Nathe's: 2nd cousin 241 cM

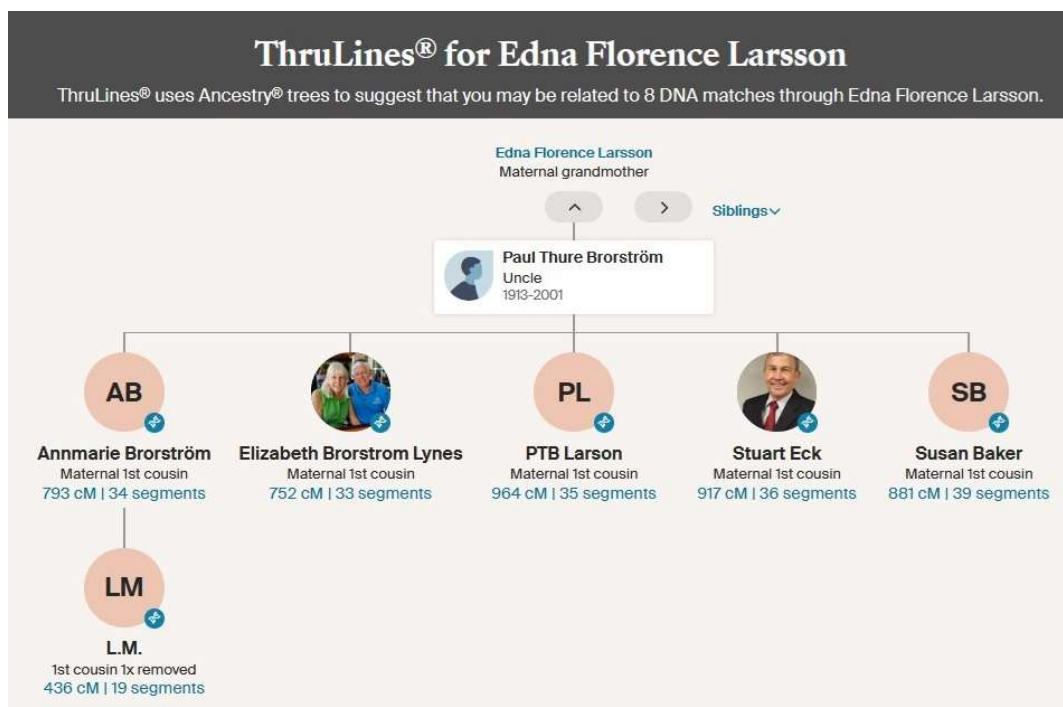
Leslie is Annmarie's daughter, and Robert is Susan's son.

Ancestry.com has a feature called ThruLines®, in which software automatically creates a chart showing a person's DNA matches who all are descended from a common ancestor. Here is my ThruLines® chart for my maternal grandmother, Edna Florence Brorström:



This chart shows Edna at the top, as well as each of her three children: Paul Thure Brorström Jr., Grace Florence Brorström, and Ruth Ida Brorström. The chart indicates that I have DNA matches with six descendants of PTB Jr., a DNA match with my daughter Amy, and a DNA match with Ruth's grandson, Matthew Nathe. (I edited this chart to show that Paul R. Nathe is Matthew's father.)

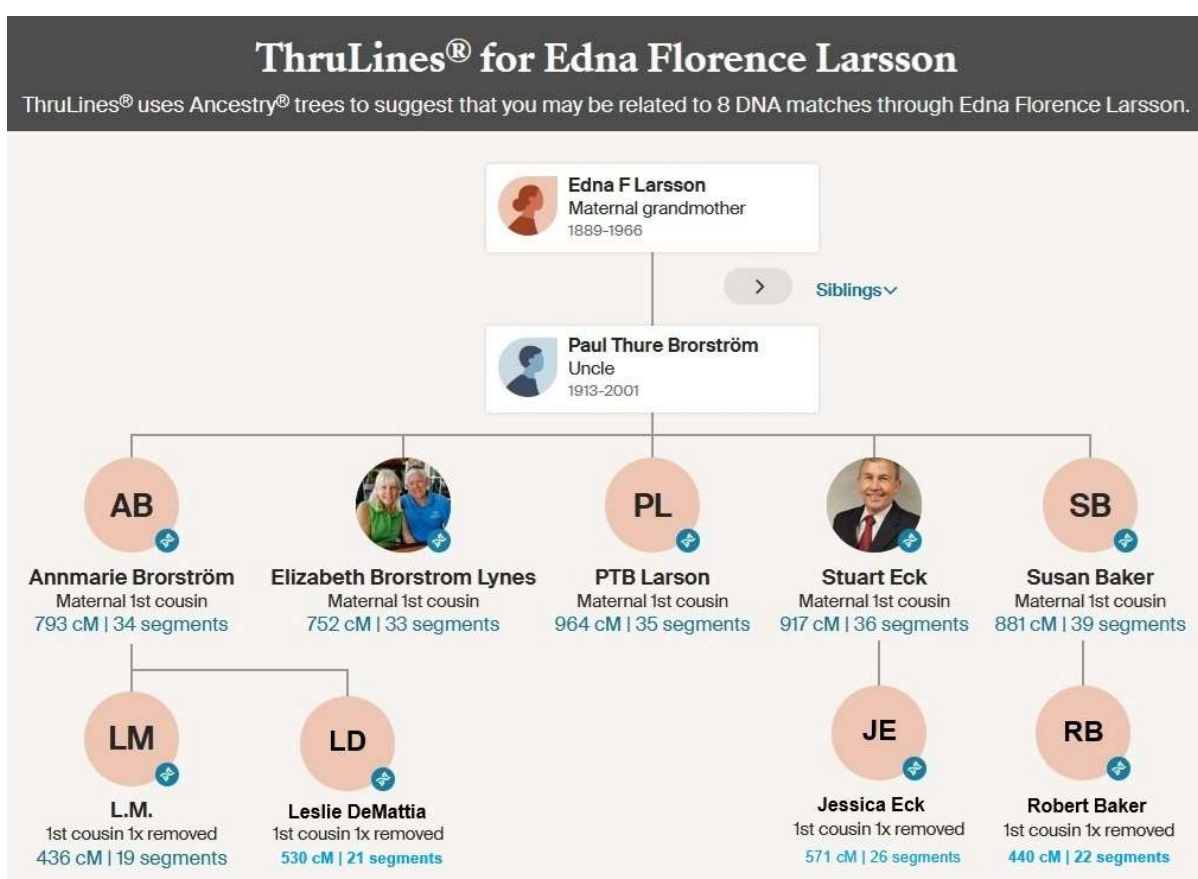
For completeness, here is the branch of my ThruLines® chart for Edna Florence Larsson that shows my DNA matches with descendants of Edna’s son, PTB Jr.:



Note that three DNA matches are missing from this chart:

1. Annmarie’s other daughter, Leslie DeMattia – Leslie’s DNA profile is not linked to her family tree.
2. Stuart’s daughter, Jessica Lynn Eck – her family tree has an error that prevents Ancestry.com from making the correct family connection.
3. Susan’s son, Robert Baker – All of the people in his family tree are marked “Private”, and I have no idea who they are and why software on Ancestry.com doesn’t connect him to his mother Susan.

I edited this branch of my ThruLines® chart to add these three individuals:

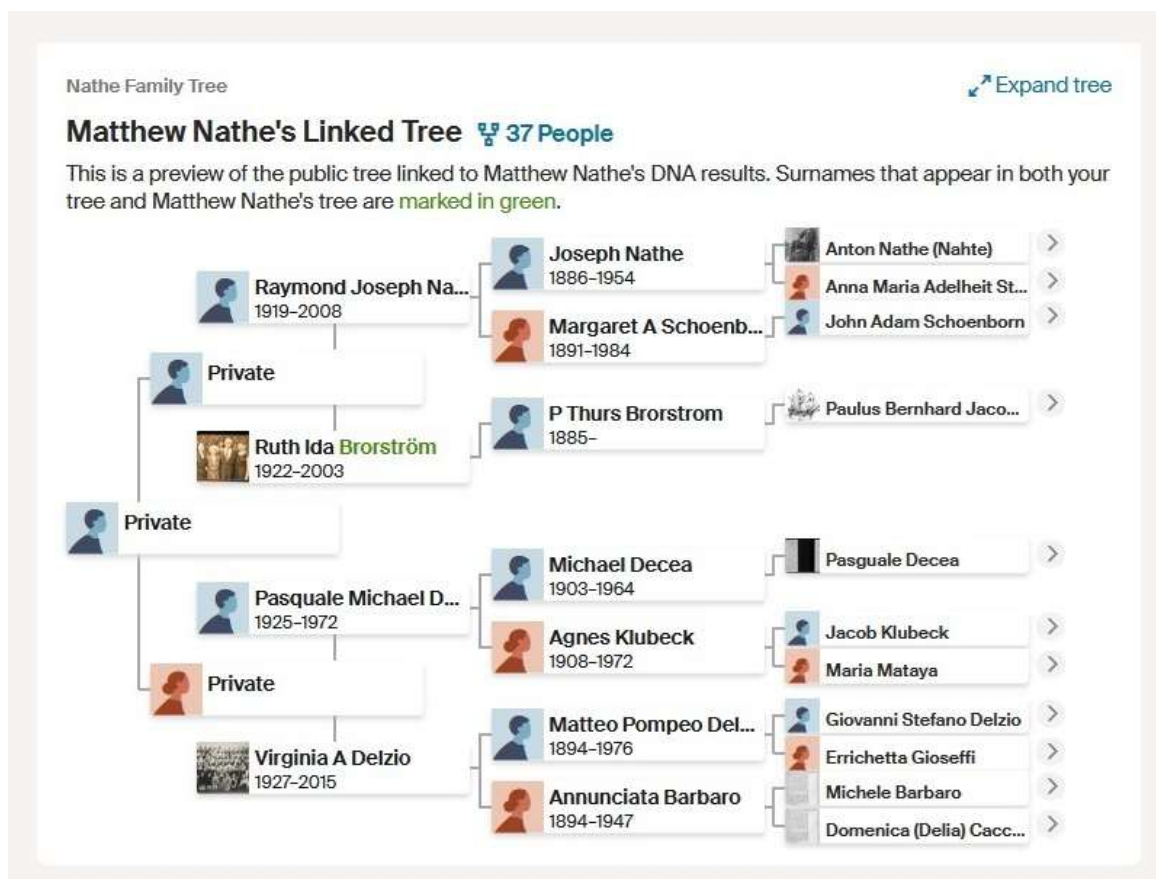


Overall, my ThruLines® chart for Edna Florence Larsson shows how Matthew Nathe is related to

- Burks
- Amy
- Annmarie
- Lauren
- Leslie
- Beth
- Peter
- Stuart
- Jessica
- Susan
- Robert

These people are Matthew's closest DNA relatives on his paternal grandmother's side of his family tree – each of them are either a first-cousin once-removed or a second-cousin. I should add that my ThruLines® chart for Edna F. Larsson's husband, Paul Thure Brorström Sr., is identical to Edna's chart.

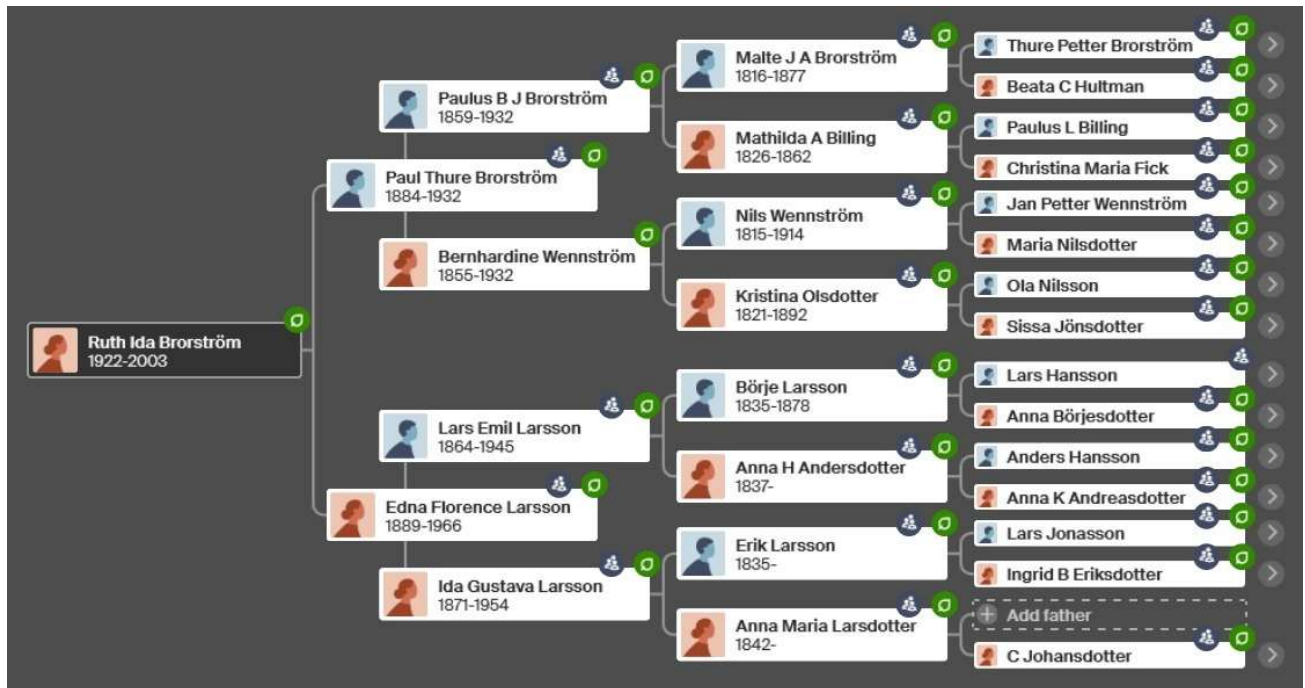
I next looked at Matthew's pedigree chart:



This chart shows Matthew's paternal grandfather, Raymond Joseph Nathe (1919-2008), and his paternal grandmother, Ruth Ida Brorström (1922-2003). Raymond was descended from German immigrants, and as I mentioned previously, Ruth was descended from Swedish immigrants.

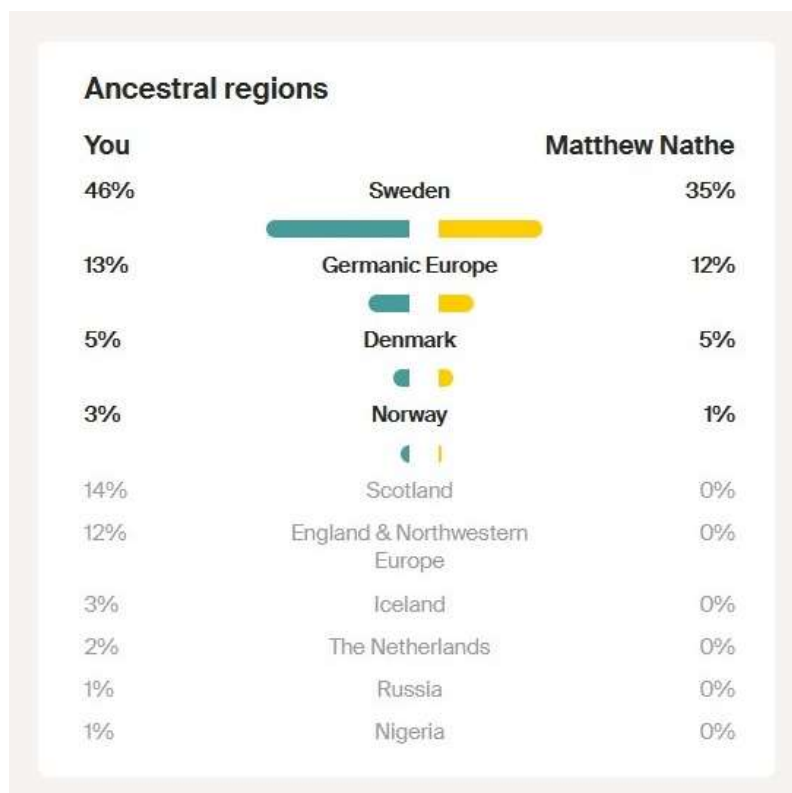
The lower half of this chart shows Matthew's maternal lines, and it appears that all the ancestors on this side of his family were descended from Italian immigrants.

Since Matthew's pedigree chart showing his paternal grandmother's ancestry is incomplete, I thought that it would be good to show what I know it to be:



This chart shows the four Swedish ancestral lines going back from Ruth Ida Brorstrom – these lines are Brorström, Wennström, Larsson, and Larsson (yes, a Larsson married a Larsson). Based on my extensive genealogical research, our ancestors in all four of these ancestral lines lived in Sweden for many generations. This means that my mother Grace, and Matthew’s paternal grandmother Ruth, were both 100% Swedish (or very close to it).

I went on to look at Matthew’s ethnicity estimates (what Ancestry.com is now calling “Ancestral regions”):

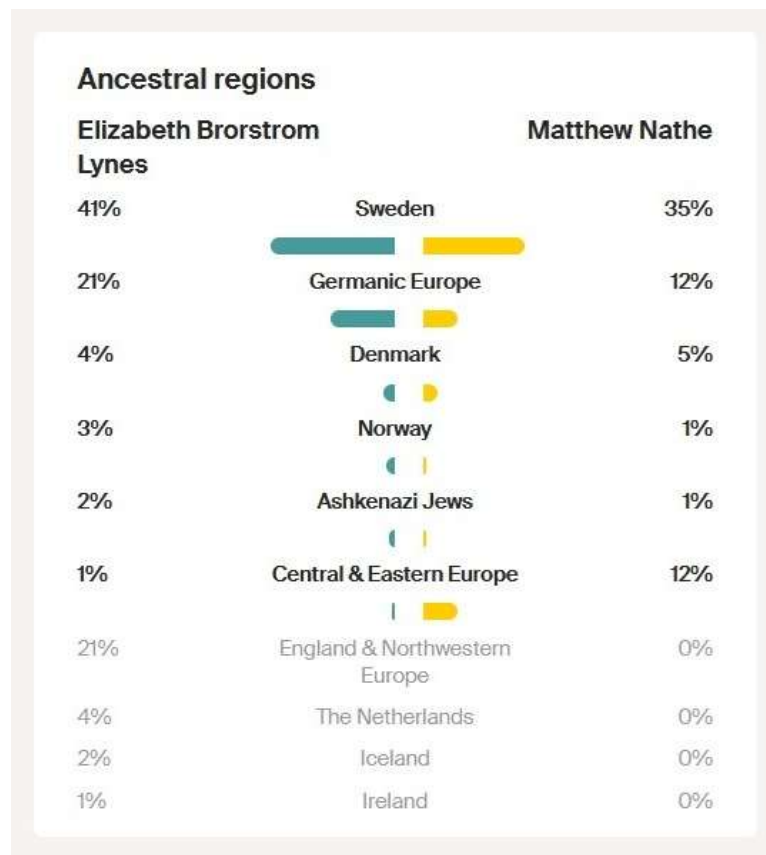


This chart shows my ethnicities at the left and Matthew’s at the right. Unfortunately, it only shows how Matthew’s ethnicities match mine. And those matching ethnicities are Sweden (35%), Germanic Europe (12%), Denmark (5%), and Norway (1%). Since I don’t have any Italian ethnicity, it doesn’t show Matthew’s Italian ethnicity. Darn!

I was surprised by Matthew’s ethnicities from Sweden and Germanic Europe. Since his paternal grandmother Ruth was likely close to 100% Swedish, I would have expected Matthew to be ~25% Swedish. And since his paternal grandfather

Raymond was likely close to 100% German, I would have expected Matthew to be ~25% German. But instead, Matthew is 35% Swedish and 12% German.

I have access to my Brorström cousins' DNA profiles on Ancestry.com. They are the children of Paul Thure Brorström Jr. (1913-2001). Here is how Matthew compares with my late cousin Beth Brorström Lynes (1949-2024):



The interesting findings here are that Matthew is 1% Ashkenazi Jew and 12% Central & Eastern Europe. (Since I don't have either of those ethnicities, Ancestry.com didn't show these ethnicities for Matthew in the comparison with me).

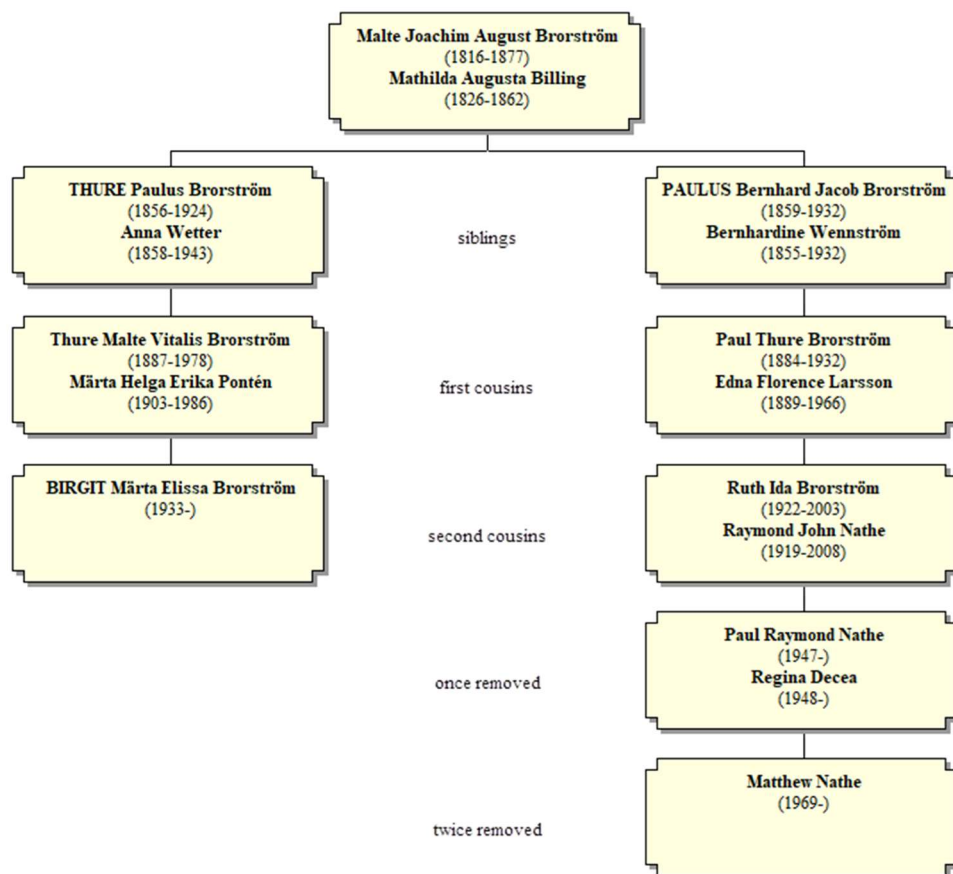
The percentages for Matthew in Beth's comparison add up to 66% - and my guess is that most (if not all) of Matthew's remaining 34% ethnicity is Italian.

I now am going to change direction and look at some of Matthew's DNA matches on his paternal grandmother's side of the family - these are Swedish and Swedish-American individuals that I know, since I also have DNA matches with them.

I'll start with the Brorström ancestral line. The first DNA match from this line is Birgit Tesch (née Brorström):



Here is a chart showing how Matthew and Birgit are related:



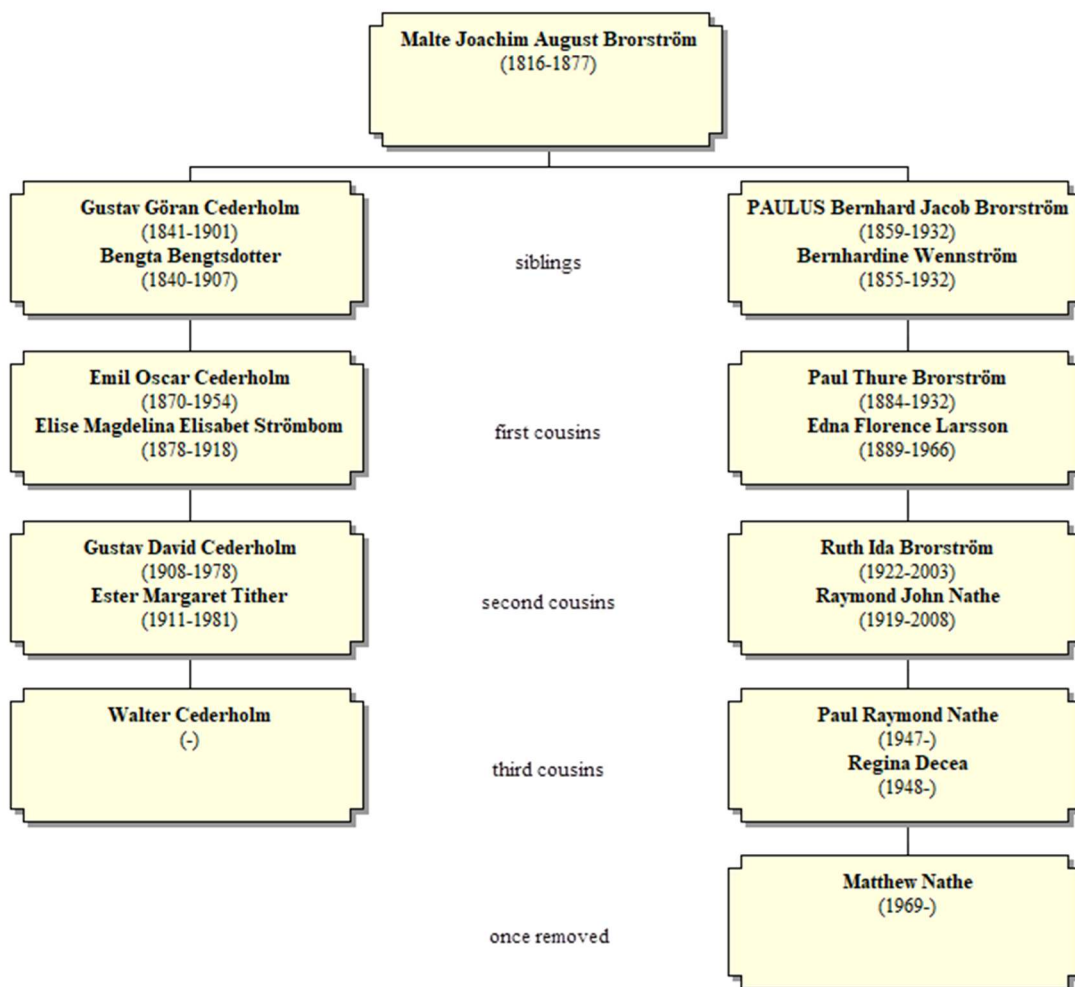
Matthew and Birgit both are descended from Malte Brorström (1816-1877) and his wife Mathilda Billing (1826-1862). Based on this chart, Birgit and Matthew are second-cousins twice-removed. Note that Matthew also has a DNA match with Birgit's daughter, Clara Tesch Thunberg:

<b>Clara Tesch Thunberg</b>		<b>Your:</b> Half 3rd cousin 1x removed or 4th cousin 14 cM Maternal side	<b>Matthew Nathe's:</b> 4th cousin or half 3rd cousin 1x removed 39 cM

Another one of Matthew's DNA matches that goes back to Malte Brorström is Walter Cederholm:

<b>wceder</b>		<b>Your:</b> 3rd cousin 193 cM Maternal side	<b>Matthew Nathe's:</b> Half 2nd cousin 1x removed or 2nd cousin 2x removed 66 cM

Here is a chart showing how Matthew and Walter are related:



Note that Malte Brorström's first child was Gustav Göran Cederholm (1841-1901). Gustav was born out of wedlock and chose the Cederholm surname as an adult – and there is a fascinating story about all this – see:

<http://www.burksoakley.com/SwedishGenealogy/CederholmRelationship.pdf>

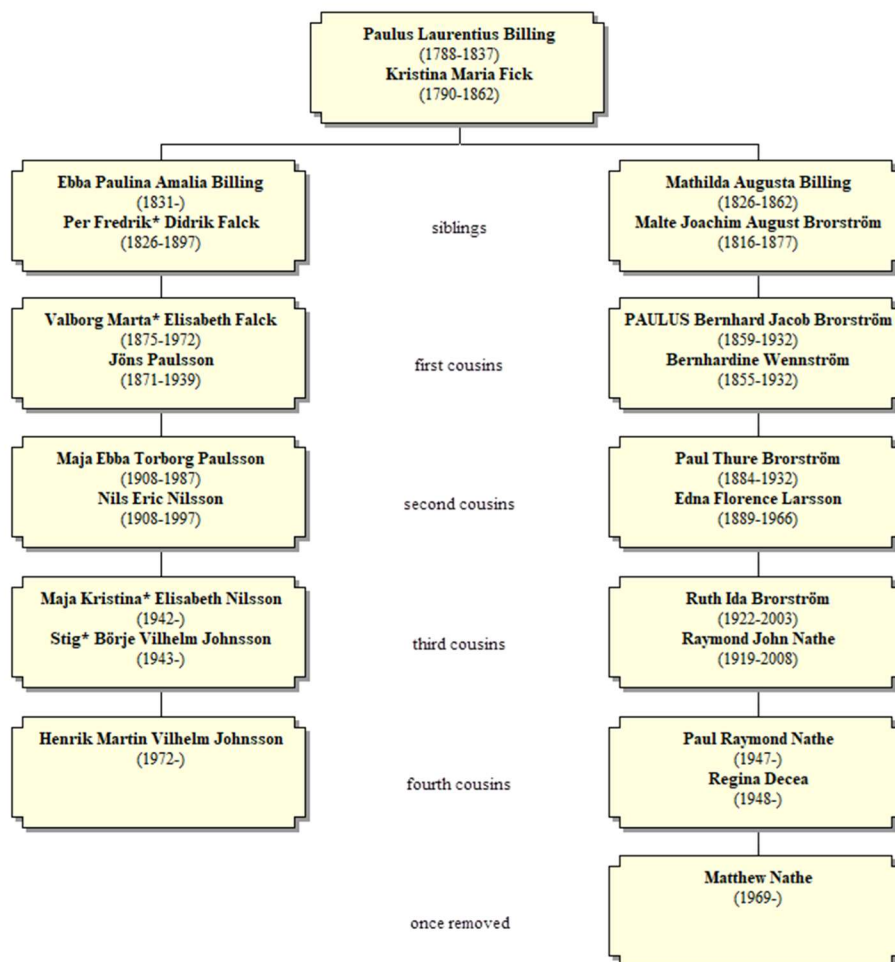
<http://www.burksoakley.com/SwedishGenealogy/NewCederholmConnections.pdf>

[http://www.burksoakley.com/SwedishGenealogy/CederholmPresentation\\_21Feb22.pptx](http://www.burksoakley.com/SwedishGenealogy/CederholmPresentation_21Feb22.pptx)

Another interesting DNA match that Matthew has on our Brorström line is with a famous Swede named Henrik Johnsson:

	<b>Henrik Johnsson</b>		<b>Your:</b> Half 3rd cousin 1x removed or 3rd cousin 2x removed 17 cM Maternal side	<b>Matthew Nathe's:</b> 4th cousin or half 3rd cousin 1x removed 30 cM
--	------------------------	--	---	--

Here is how Matthew and Henrik are related:



Henrik and Matthew are both descended from Paulus Laurentius Billing (1788-1837) and his wife Kristina Maria Fick (1790-1862). This couple were the parents of Mathilda Augusta Billing (1826-1862), who was the second wife of Malte Brorström.

I claimed that this is an interesting DNA match for Matthew, since Henrik is a famous media personality in Sweden. I wrote about this branch of our family tree earlier:

<http://www.burksoakley.com/SwedishGenealogy/PaulusLaurentiusBilling.pdf>

In particular, note that Henrik appeared in a commercial for Ancestry.se (the Swedish version of Ancestry.com) – see:

<https://youtu.be/qqjjZMl3V9Y>



Henrik hittade nya släktingar när han gjorde sitt DNA-test hos Ancestry

Let me now move on to Matthew's Wennström matches. In our Wennström ancestral line, the Swedish immigrant was Bernhardine Wennström (1855-1932). Her parents were Nils Wennström (1815-1914) and Kristina Olsdotter (1821-1892).

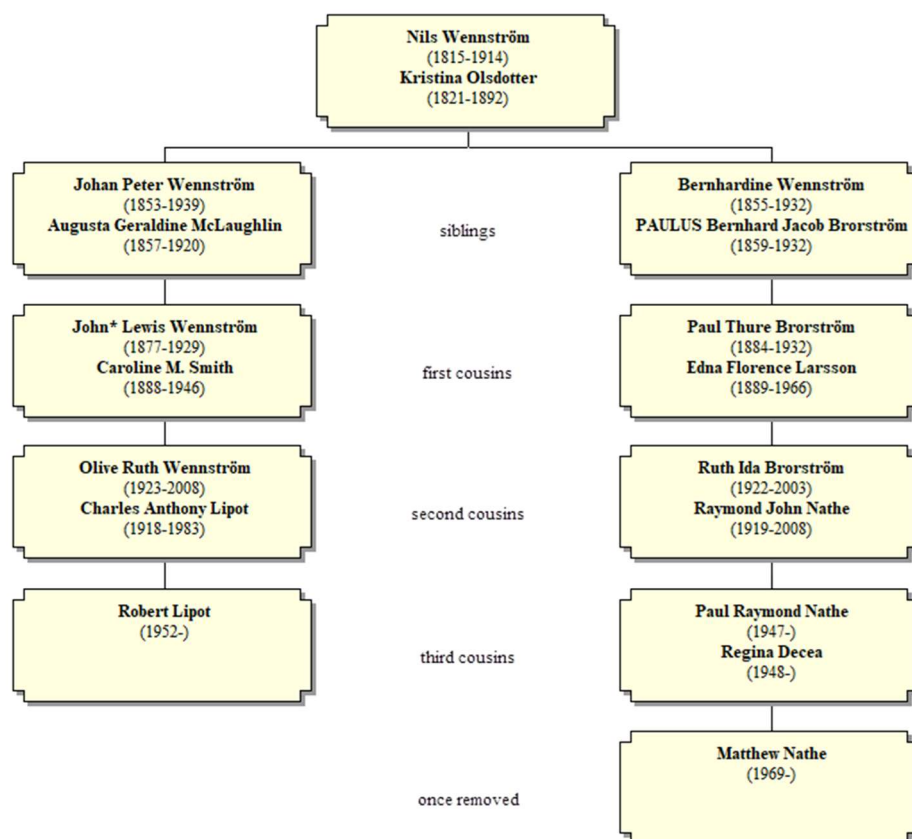
Matthew has a DNA match with Robert Lipot:

Robert Lipot

Your: Half 3rd cousin or 3rd cousin 1x removed  
45 cM  
Maternal side

Matthew Nathe's: 2nd cousin 1x removed or half 1st cousin 2x removed  
117 cM

Robert and Matthew are both descended from Nils Wennström and his wife Kristina Olsdotter, as shown in the following chart:



The Wennström-Olsdotter couple lived in southern Halland County, Sweden, and they are buried in the church cemetery in Hasslöv. I have visited there several times since 2016.

As an aside, software on the Ancestry.com website correctly identified that Matthew and I have common ancestors in Central & Southern Sweden:

Shared journeys

Central & Southern Sweden

Southwest Sweden, consisting of the counties of Västra Götaland, Halland, and part of Småland is...

Matthew and I also have a “Shared DNA Match” with another person who is a Wennström descendant, and that is Stephen Reed:

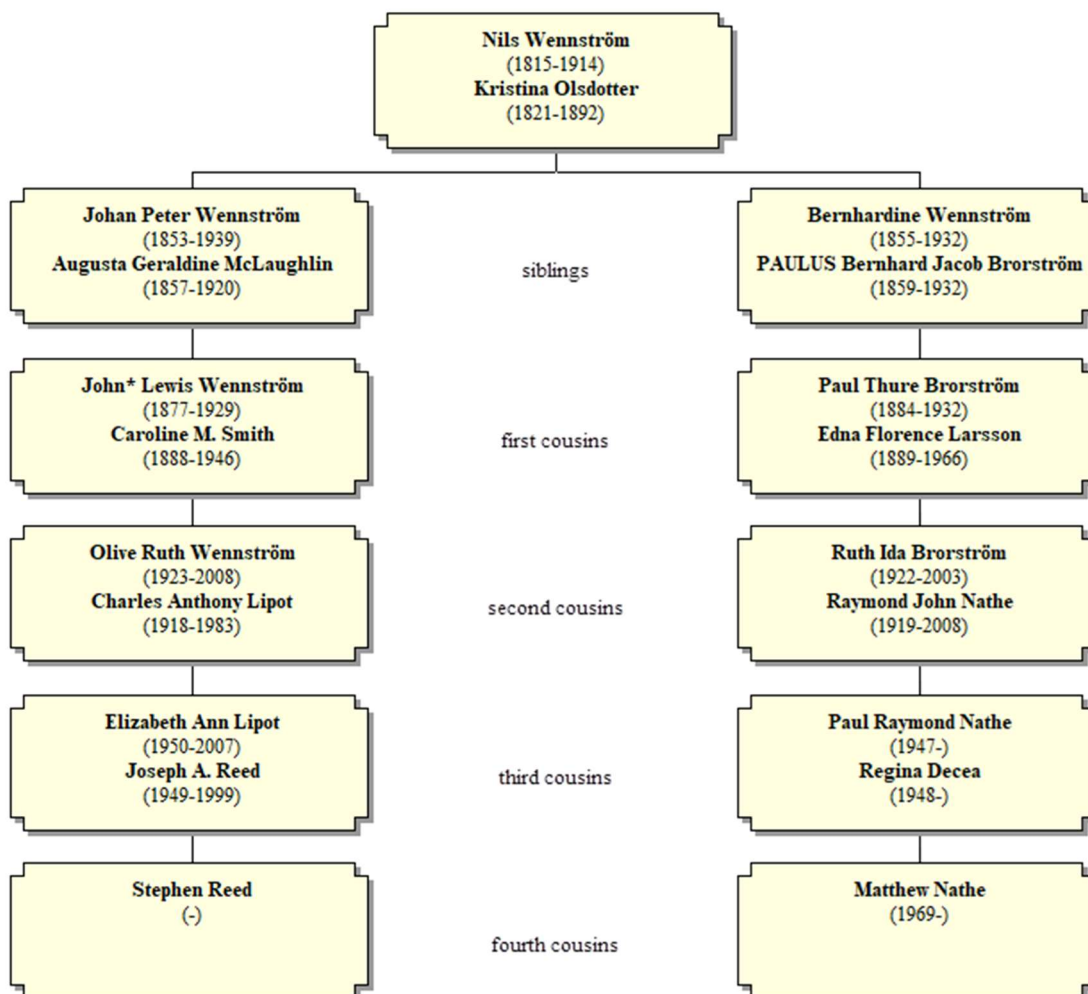


Stephen Reed

Your: 3rd cousin 1x removed, 37 cM, Maternal side

Matthew Nathe's: 4th cousin or half 3rd cousin 1x removed, 28 cM

Here is a chart showing how Matthew and Stephen are related:



Based on the last two relationship charts, Stephen Reed must be Robert Lipot’s nephew.

Moving on, another Wennström descendant with whom Matthew and I have a “Shared DNA Match” is Gunilla Torell Guenther:

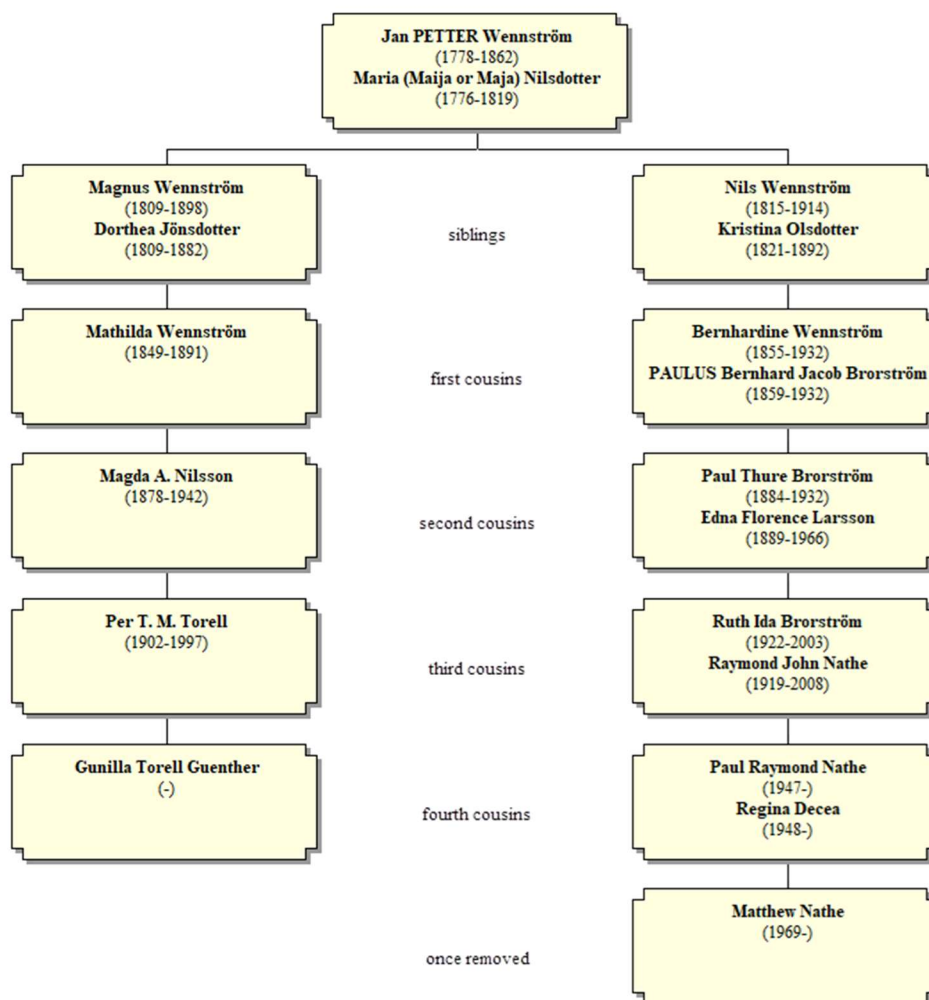


Gunilla Torell Guenther

Your: 4th cousin or half 3rd cousin 1x removed, 17 cM, Maternal side

Matthew Nathe's: Half 3rd cousin 1x removed or 3rd cousin 2x removed, 21 cM

Here is a chart showing how Matthew and Gunilla are related:



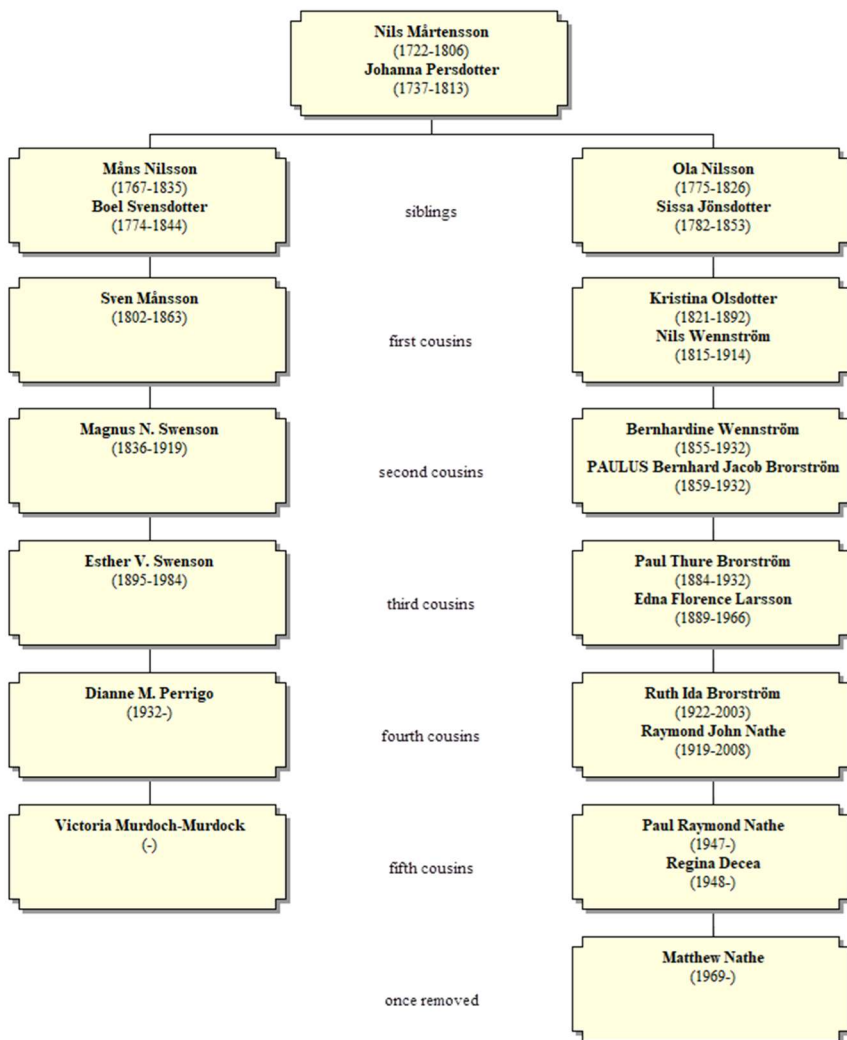
Matthew and Gunilla both are descended from Jan Petter\* Wennström (1778-1862) and his wife Maria Nilsdotter (1776-1819). This couple were the parents of Nils Wennström.

I'll just present one more of the "Shared DNA Matches" that Matthew and I have on our Wennström line – and that is with Victoria Murdoch-Murdock:

<p><b>Victoria Murdoch-Murdock</b></p> <p>23 cM</p> <p>Maternal side</p>	<p>Your:</p> <p>Half 3rd cousin 1x removed or 4th cousin</p> <p>23 cM</p> <p>Maternal side</p>	<p>Matthew Nathe's:</p> <p>Half 3rd cousin or 3rd cousin 1x removed</p> <p>41 cM</p>
--	--	--

I honestly have no idea about the "Murdoch-Murdock" name. Is that her real last name? Or are there two alternative spellings of her last name? Note that Victoria and I share 23 cM of DNA, while Victoria and Matthew share 41 cM – and Matthew has to be one more generation removed from the common ancestors we share with Victoria than I am. Again, this is a good example of the random ways in which autosomal DNA is inherited.

Here is a chart showing how Matthew and Victoria are related:



Oh my! This DNA match goes back a long, long way. Victoria and Matthew are both descended from Nils Mårtensson (1722-1806) and his wife Johanna Persdotter (1737-1813). Based on this chart, Matthew and Victoria are fifth-cousins once-removed (5C1R).

In 2020, the noted genetic genealogist Blaine T. Bettinger published the results of his study of the amount of DNA shared by two people of known genealogical connections. Here is the result for 5C1R:



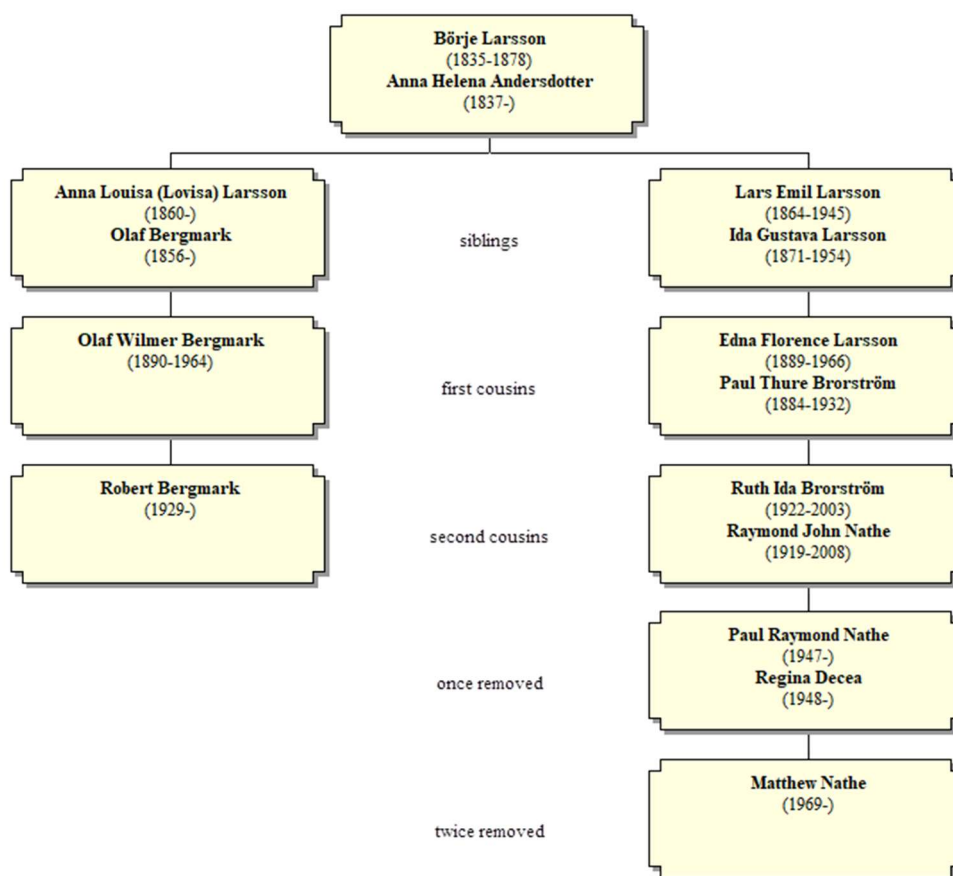
Bettinger found at 5C1R on average share 21 cM of DNA, with a range of 0-80 cM. So Matthew's DNA match with Victoria (41 cM) is well-above average, but within the range of observed values.

Phew! All these "Shared DNA Matches" – and I've only given a few selected examples from our Brorström and Wennström lines. Just so that the reader doesn't lose interest, I'll try to move quickly through the two Larsson lines.

Ruth Ida Brorström's maternal grandfather was Lars Emil Larsson (1864-1945), and he lived in Fjärås, Sweden, before immigrating to America in the 1880's.

Here are a few of the “Shared DNA Matches” that Matthew and I have in common on the Lars Emil Larsson line. The first is Robert Bergmark:

Here is a chart showing how Matthew and Robert are related:



Matthew and Robert are both descended from Börje Larsson (1835-1878) and his wife Anna Helena Andersdotter (1837-). This couple lived in Fjärås, which is a small town located on the west coast of Sweden, just a short distance south of Göteborg.

Note that Robert is in the same generation as Matthew’s paternal grandmother, Ruth Ida Brorström. Robert’s father, Olaf Wilmer Bergmark (1890-1864), was married in Pleasantville, NY, and lived his life in the town of Mount Pleasant, NY:

**Olaf Wilmer Bergmark** from tree Mariann Andersson – släkträd

Birth	21 Mar 1890 New York, USA	Father	<b>Olaf Bergmark</b> (1836-1939)
Marriage	18 Oct 1924 Pleasantville, Westchester, New York, USA	Mother	<b>Anna Lovisa Börjesdotter</b> (Born 1859)
Residence	1930 Mount Pleasant, Westchester, New York, USA	Spouse	<b>Dorothy M Miller</b> (1897-1987)
Death	Mar 1964 Colorado, USA		

9168 People 2 Records 4 Sources

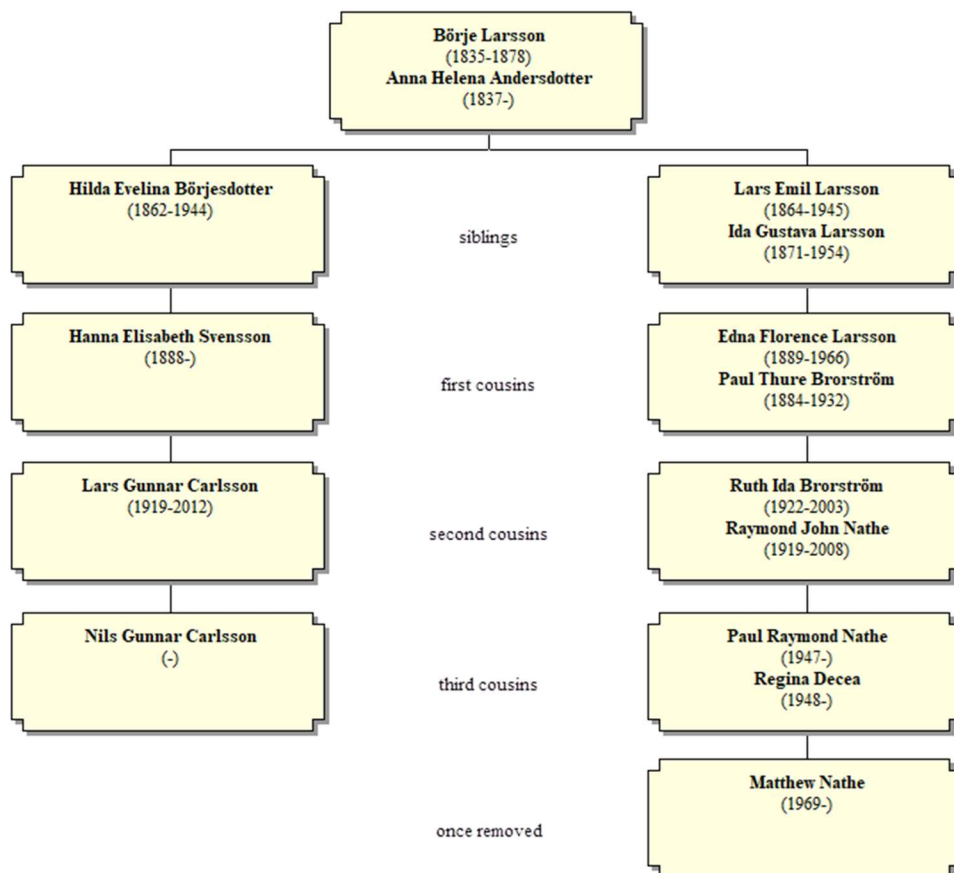
If you are not familiar with towns and villages in the State of New York, Mount Pleasant is a town in Westchester County, NY, encompassing the village of Pleasantville, as well as the villages of Sleepy Hollow and Briarcliff Manor, and other areas like Hawthorne and Thornwood.

Edna Florence Larsson (Matthew’s great-grandmother) and Olaf Wilmer Bergmark were first-cousins, and they both lived in the Pleasantville area. I’m sure that they must have interacted with each other regularly.

Another “Shared DNA Match” that Matthew and I have that goes back on the Lars Emil Larsson line in Fjärås is Nils Gunnar Carlsson:

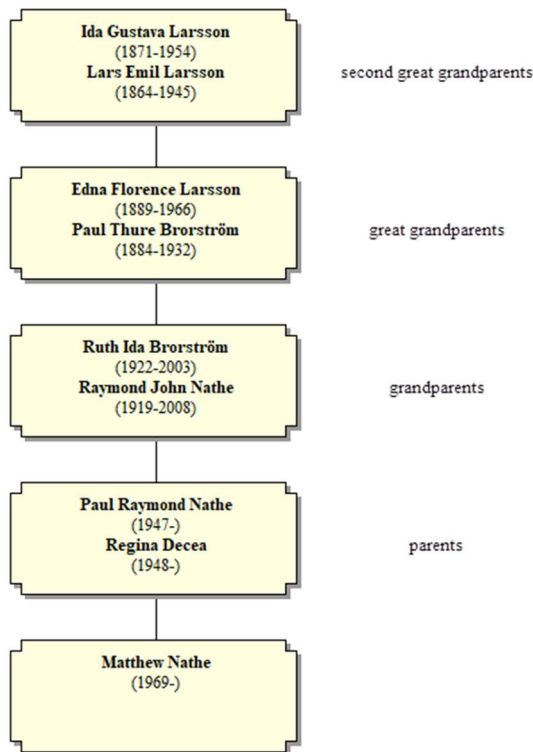


Here is a chart showing how Matthew and Nils are related:



Matthew and Nils are both descended from Börje Larsson (1835-1878) and his wife Anna Helena Andersdotter (1837-). In this case, Nils is descended from a daughter of the Larsson-Andersdotter couple – Hilda Evelina Börjesdotter (1862-1944). Recall that in the previous example, Robert Bergmark was descended from their older daughter, Anna Louisa Larsson (1860-).

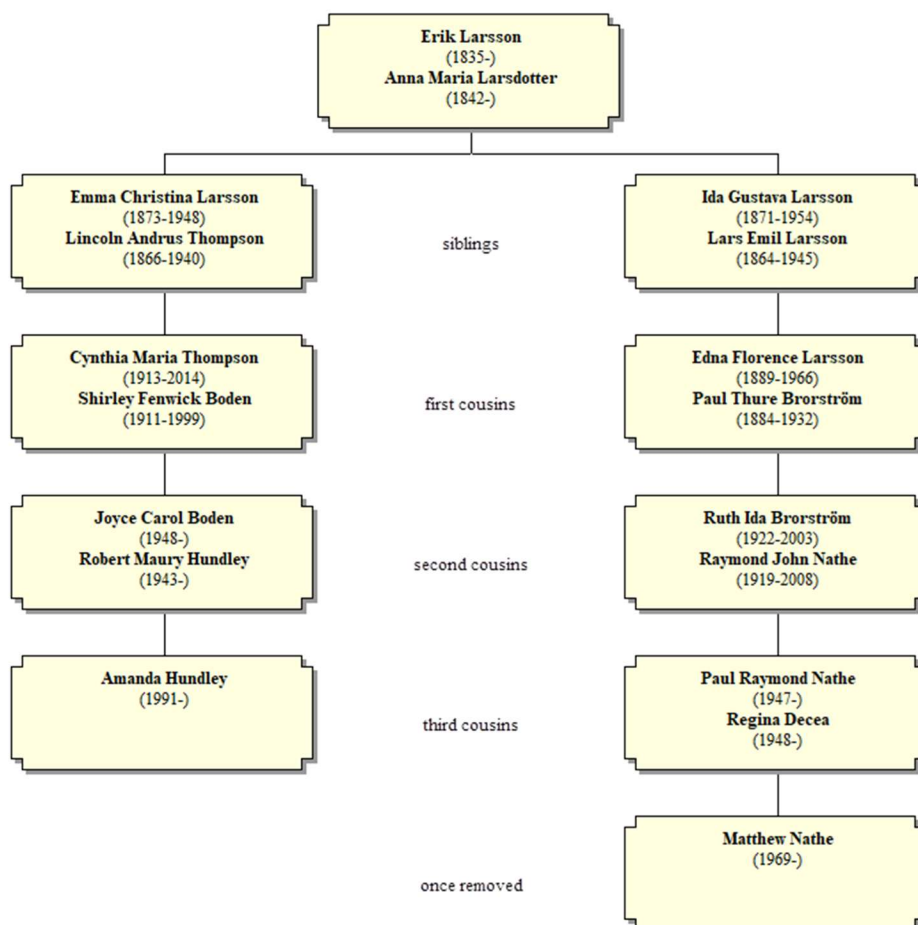
The last ancestral line for Matthew’s paternal grandmother, Ruth Ida Brorström, is through her maternal grandmother, Ida Gustava Larsson (1871-1954). Here is a chart showing Matthew’s line back to this woman, who was Matthew’s second-great grandmother:



As a family, we have very few DNA matches with this branch of our family. See:

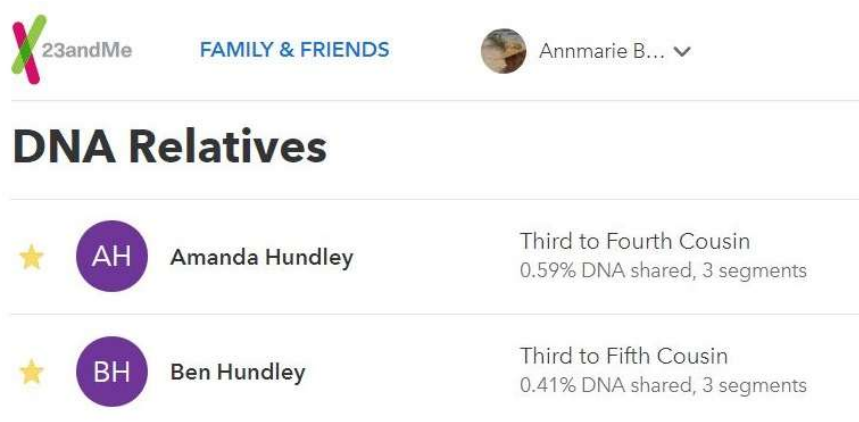
<http://www.burksoakley.com/SwedishGenealogy/#Ida-Gustava-Larsson>

Our closest relatives on this Larsson line are with the children of Joyce Carol Boden (1948-), Amanda and Ben Hundley. Joyce is a granddaughter of the younger sister of Ida Gustava Larsson. Here is a chart showing how Amanda and Matthew are related:



Unfortunately, neither Amanda or Ben have their DNA on the Ancestry.com website. However, they both are on the 23andme.com website, and my

Brorström first-cousins have DNA matches with them. Here is Annmarie's DNA match with Amanda and Ben:



The screenshot shows the 23andMe interface. At the top, there is a logo for 23andMe, the text 'FAMILY & FRIENDS', and a user profile for 'Annmarie B...'. Below this is a section titled 'DNA Relatives'. Two matches are listed:

Match	Relationship	Shared DNA
Amanda Hundley (AH)	Third to Fourth Cousin	0.59% DNA shared, 3 segments
Ben Hundley (BH)	Third to Fifth Cousin	0.41% DNA shared, 3 segments

I would have to look at Matthew's DNA matches to see if he has any matches with this branch of our Swedish ancestors.

### **Summary:**

In this narrative, I presented a number of details of my new DNA match with Matthew Nathe. Matthew is the older son of my first-cousin, Paul Nathe. In turn, Paul's mother, Ruth, and my mother, Grace, were sisters. All this means that Matthew and I are first-cousins once-removed.

Matthew has DNA matches with all of the descendants of Paul Thure Brorström Sr. and his wife Edna Florence Larsson who have tested on Ancestry.com. In addition, Matthew and I have "Shared DNA Matches" with descendants of three of our Swedish ancestral lines – Brorström, Wennström, and Larsson.

Matthew's ethnicity estimates show that he is 35% Swedish (plus 5% Danish and 1% Norwegian), but only 12% German. I had expected less Swedish and more German, given what I know about the ancestry of his paternal grandparents.

In closing, it would be great to have guest access to view Matthew's DNA matches. Who knows, I might find a connection involving Ida Gustava Larsson...